

ACHIM KÜHN " Aggressive Veränderung" 1989 Stahl 38/20/20 cm



Achim Kühn
metal plastic art

›Aggressive Veränderung‹
I und II, 1990
steel



›Kleine Klangmuschel‹ 1988
wrought steel



›Mit eingesetztem
Stahlkristall‹ 1964
wrought steel



›Aggressive
Veränderung‹ III, 1990
steel



Plastik 1975
wrought steel,
stainless steel

›Auseinandergesprengt‹ 1982
steel, brass



›Plastik für Sch.‹ 1985
wrought steel,
ammonites

Achim Kühn
studio-workshop
for steel and
metal design
Richterstraße 6
Berlin 1185
Germany

photos: by Achim Kühn
design: Hans-Joachim Petzak

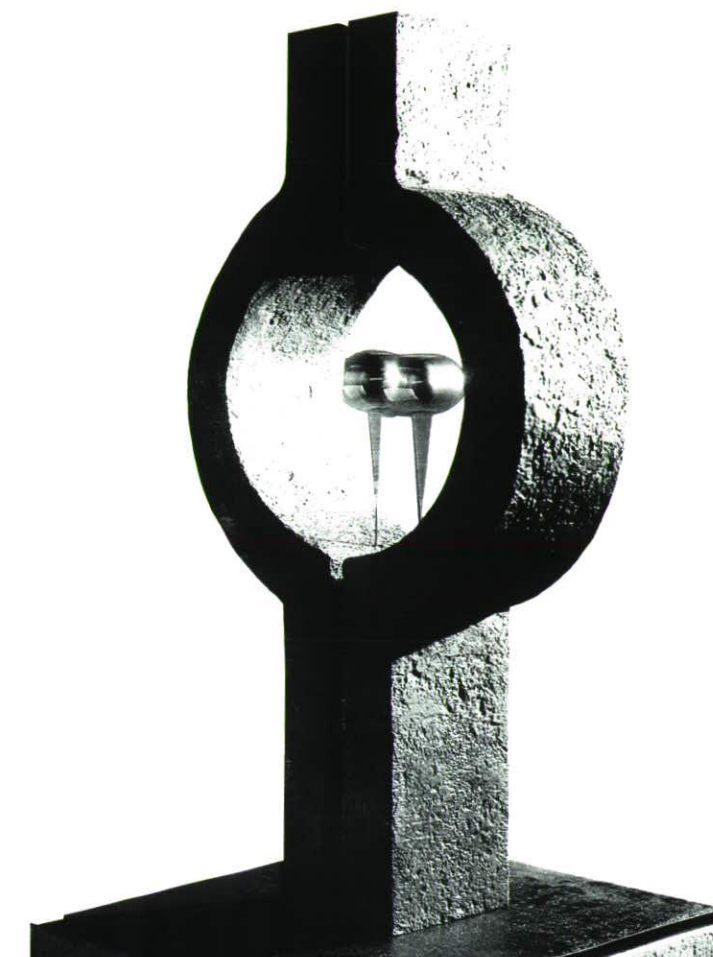
Biographical data

1942 born in Berlin on the 5th of april
1956-69 apprenticeship at the father's workshop
1963 examination for the title of master
1964-67 study at the college for architecture and building at Weimar, specialty: architecture
1967 taking over of the studio-workshop after the sudden death of the father
Operational (until 1969) and artistic manager (until 1972) of the artistic smithy of his grandfather Arthur Kühn & Co. in Berlin-Weißensee
1968 recognition as ›an art creating craftsman‹ by the ministry for culture
1971 member of the association of creative artists
1972 termination of the external study as graduated architect
Participation at international workshops and congresses

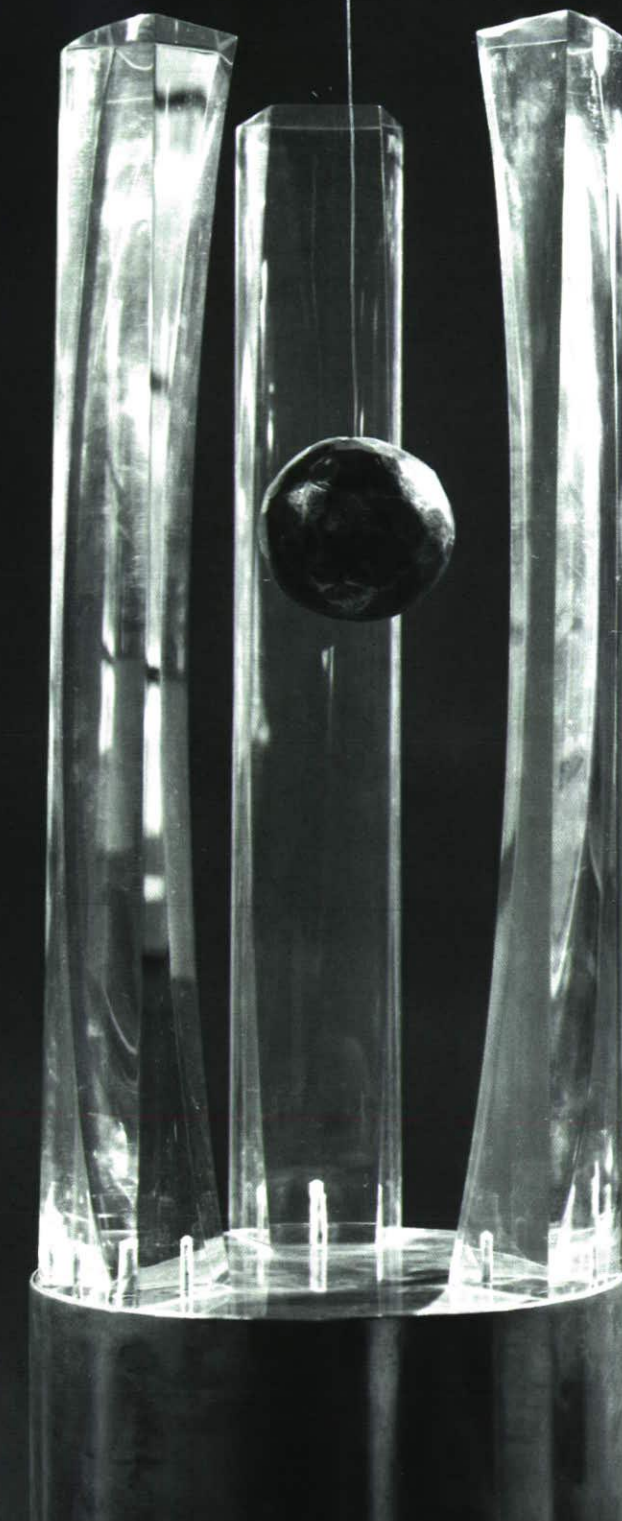
Exhibitions

among others in Berlin, Chemnitz, Helsinki, London, Moscow, New York, Rostock, Warsaw

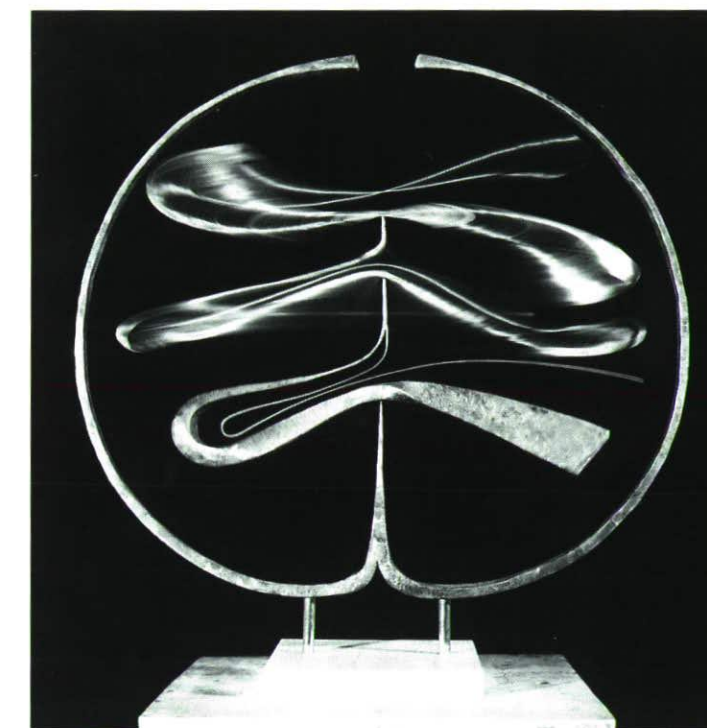
›Sich Berührende‹ 1972
wrought steel



›Gedanken über einen Raum -
der gefangene Pendel‹ 1982
steel, plexiglass
photo: by Klaus Beyer



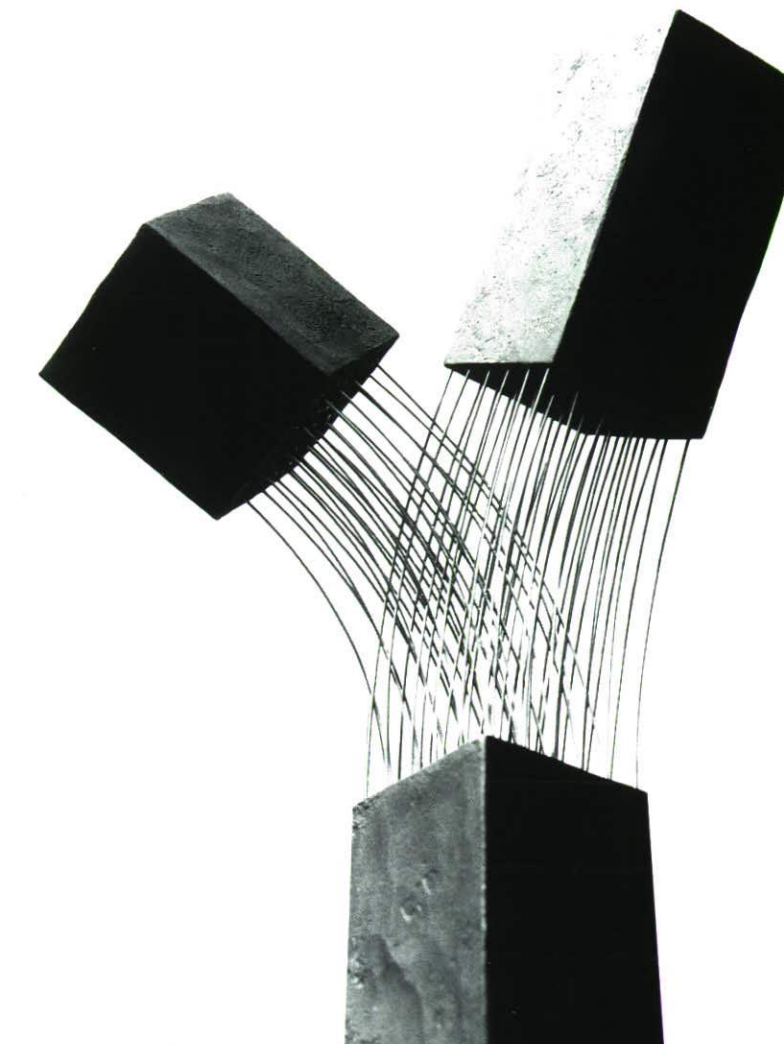
›Plastik für H. K.‹ 1983
wrought steel



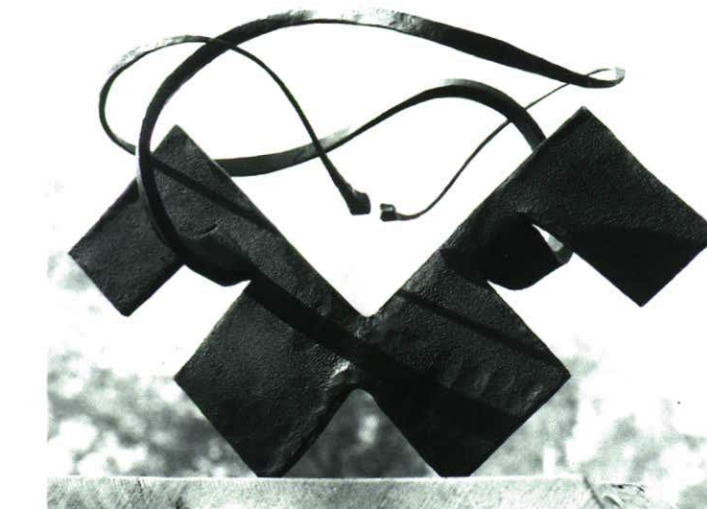
›Schwingen‹ 1988
wrought steel



›Gegensätze‹ 1990
wrought steel,
steel wire



Studie 1989
wrought steel



›Vierfach
getrennte Scheibe‹ 1982
stainless steel

