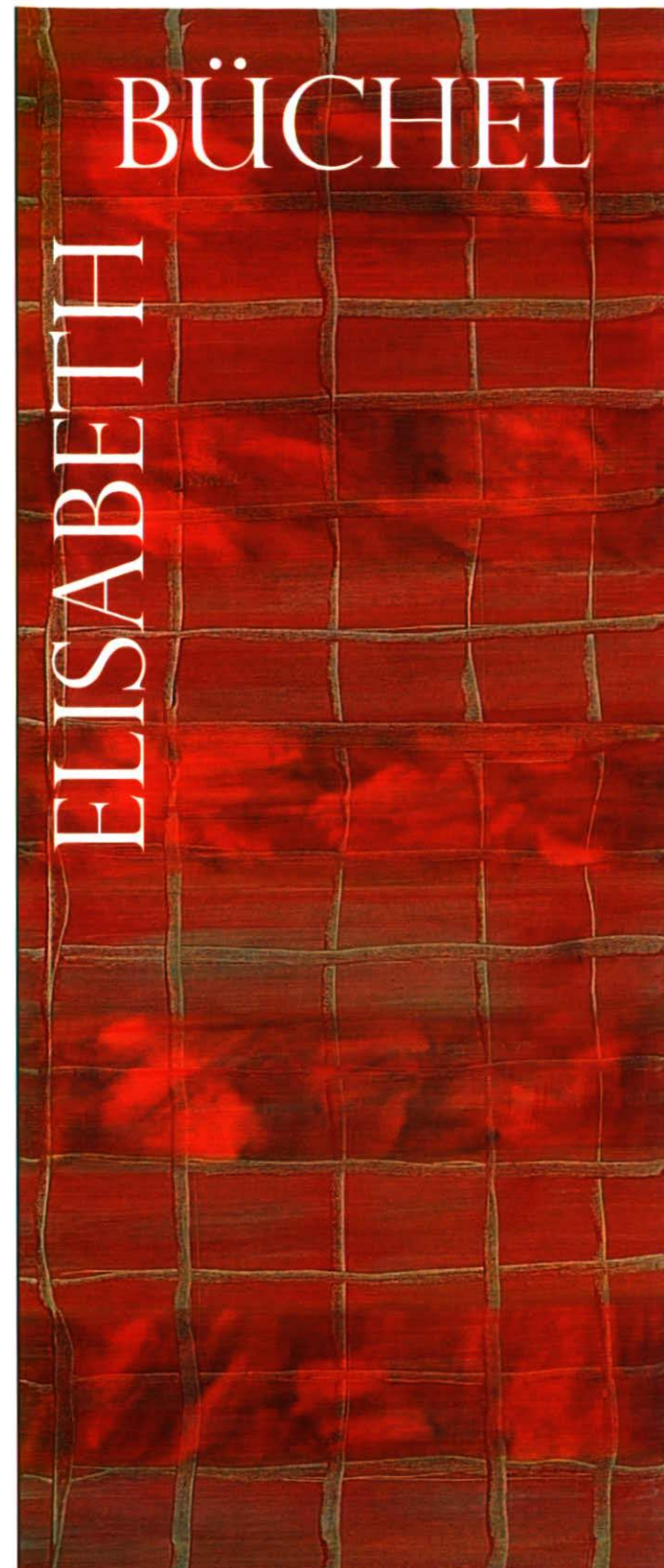




Sea 3, 2003
Acrylic on Cotton
100x80cm



ER 1, 1996
Oil on Canvas
125x95cm



ELISABETH BÜCHEL

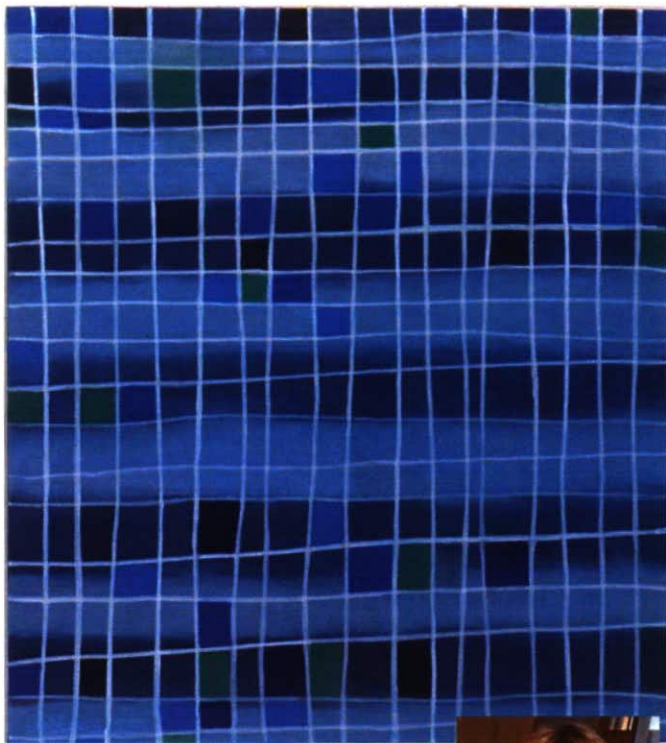
Neudorfstrasse 607
FL-9493 Mauren
Liechtenstein

Phone: +11 423 373 4658
Fax: +11 423 373 6258
E-mail: elisabeth.buechel@adon.li
www.artnet.li/cb

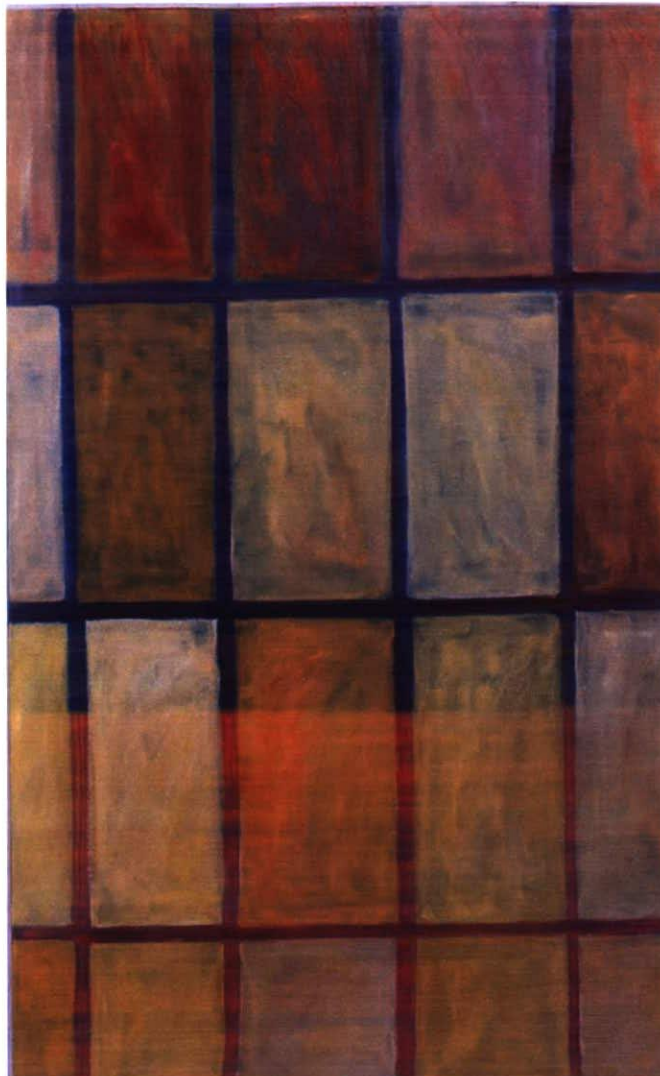


Meanwhile 1, 2003
Acrylic on Cotton
90x100cm

(Front)
Untitled, 2001
Oil on Canvas
60x140cm



(Below)
Sea 1b, 2003
Acrylic on Cotton
100x90cm



Elisabeth Büchel was born in Mauren, Liechtenstein in 1954. For over twenty years, Büchel has been creating pieces varying in style and form, reflecting what she calls a continuous painting process. "It is a kind of sounding out, a leveling off, a clarifying, and a savoring," Büchel notes.

Having attended college at Bridgeport University in Connecticut and the University of Tulsa in Oklahoma, Büchel has been able to cultivate her artistic talent resulting in a style that mixes American expressionism and European contemporary art.

Almost all of her works originated as "series" of multiples and variations, reflecting her artistic style and interest in the name of the series: "squares" in the 80s, "horizontal/vertical" in the early 90s,

"Because painting forces me to think, search, find and develop more thoroughly, I see painting as a way to define and understand the present inner and outer world."

Elisabeth Büchel

"color/form" in the mid-90s, "lines" at the end of the 90s and "rhythm" at the beginning of the 21st Century.

Büchel's *squares, rectangles* and *lines* test themselves in colors, play with each other and find highlights of their existence in her paintings by using oil or acrylic on wood, canvas or paper.

The *horizontal/vertical* series places emphasis on the defining of direction. Büchel uses paper and polyester mediums and blankets them with patterns, leaving bold, stacked impressions.

Focusing on *color* and *form*, Büchel constructs geometric shapes and combines them with strong reds, blues, yellows

(Left)
Felder 6, 2002
Oil on Canvas
140x90cm



(Below)
Untitled, 2002
Acrylic on Canvas
50x40cm

and blacks, producing variants that appear graphic and physical in nature.

As area became more important, Büchel's order became more simple and clear, leading to *lined* paintings. The line-paintings reveal the facets of the verticality and horizontality in color combinations, far from any pleasing decorative formality.

In pursuing *rhythm*, Büchel focuses on classification, evaluation and order while at the same time portraying a sense of mystery in a piece's clarity.

Though the impressions of the series vary, the common element is the use of color as an interchangeable vocabulary, allowing Büchel to develop new expressions and meanings.